

Feature

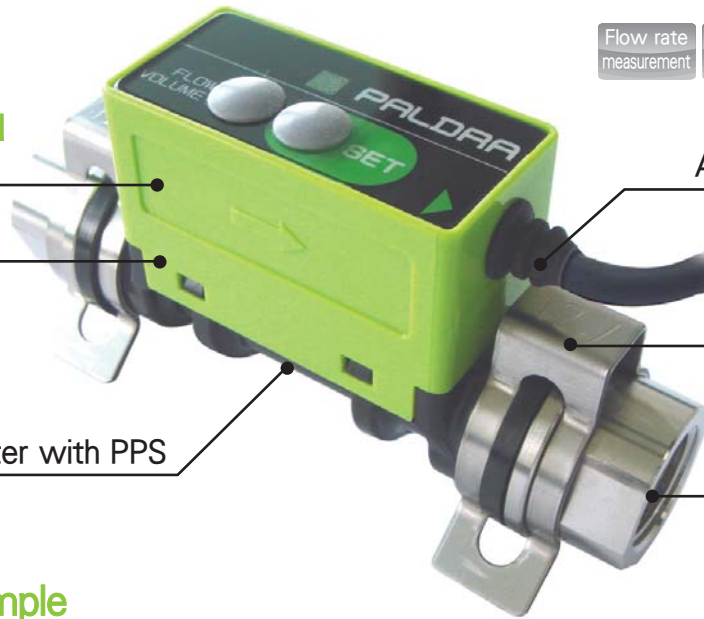
Simple structure and low price

Karman vortex

High temperature water with PPS

Flow rate measurement Alarm output Analog output

RoHS



Analog or alarm output

Easy plumbing with quick fasteners

Adapter size Rc3/8

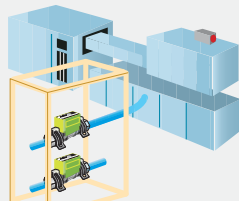
Application example

To control manage flow rate in various cooling water system.

Chiller, temperature controller, mold, machine tool, industrial heating furnace, vacuum heat treating furnace, high frequency wave temper equipment, bag making machine, laboratory high temperature furnace etc.

Quality stability

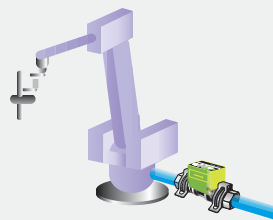
To control cooling water system of molding machine



Fluid temperature between 0-90°C is available. When flow rate is lower than set value, then the alarm is ON, prevent the equipment from overheating.

Equipment protection

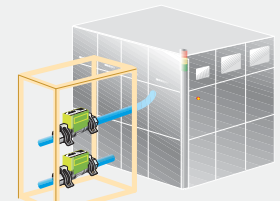
Managing flow rate of Coolant system of welding machines



Controlling the flow rate of cooling water system in order to prevent the equipment from overheating

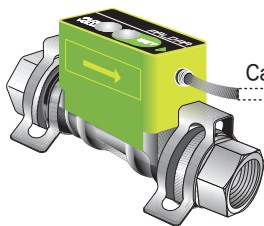
Quality controlling

To control cooling water system of vacuum equipment



When flow rate is lower than set value, then the alarm is ON, thus prevent the equipment from overheating. Flow rate with analog output is also possible.

Electric wiring



Alarm output

While ordering select only one output

Analog output

Power supply DC 24V ± 10% (Alarm output/Analog output)

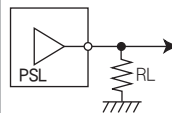
Cable details

- Red Power supply
- Black GND
- Yellow Alarm output
- Blue Alarm output return
- White Spare

- Red Power supply
- Black GND
- Yellow Spare
- Blue Spare
- White Analog output

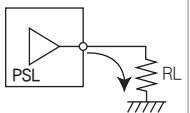
Output signals

Voltage output

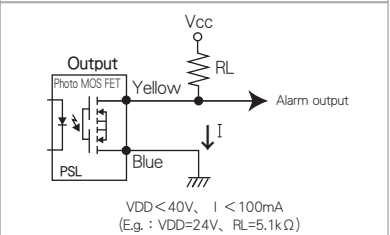


0~10V
RL ≧ 3kΩ

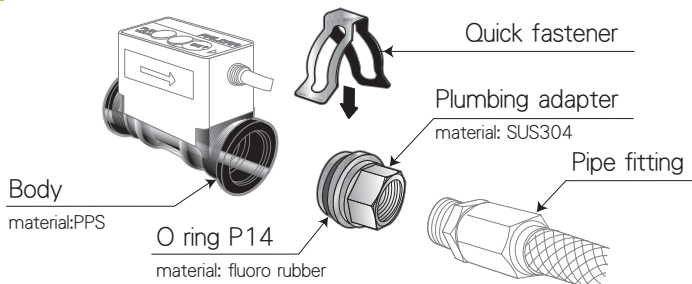
Current output



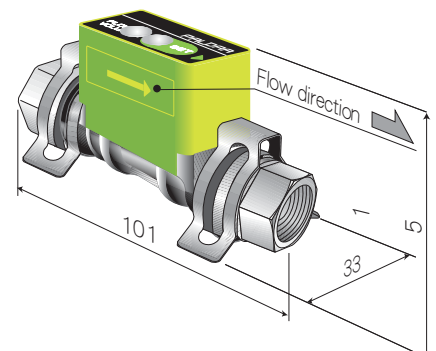
4~20mA
RL ≧ 250Ω



Connect



Outline view



Caution

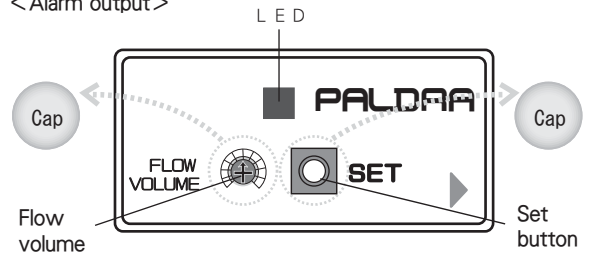
Please beware of the direct load/pressure on the flow meter (PPS). Remove the quick fastener first and take the adapter out in order to detach the meter from the plumbing, vice versa.

Specifications

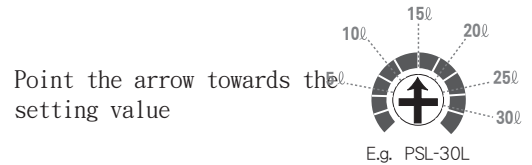
Models	PSL-5L	PSL-30L
Rated flow range	0.5~5.0L/min	5.0~30.0L/min
Fluid	Industrial water, water	
Detecting method	Karman vortex	
Fluid temperature	0~90°C (No freezing ,no dewing)	
Ambient temperature	0~50°C (No freezing ,no dewing)	
Accuracy	Flow rate output: ±2% full scale	
Maximum working pressure	1.0MPa	
Withstanding pressure	1.5MPa (at 20°C)	
Pressure loss (at the maximum flow rate)	46kPa	85kPa
Responsivity	Sampling 1s	
Power supply	DC24V±10%	
Current consumption	Max. 30mA (Current output Max. 50mA)	
Alarm output	Maximum load current	Max. DC 100mA
	Maximum applied voltage	Max. DC 40V
	Output mode	A or B output (select one)
Analog output (while ordering select only one output)	Voltage output	0~10V
	Current output	4~20mA
Display	Alarm: 2colors LED	
Certification, regulation	RoHS	
Wetted material	Body PPS, FKM Adapter SUS304	
Adapter size	Rc3/8" Quick fitting	
Weight	155g	

Setting

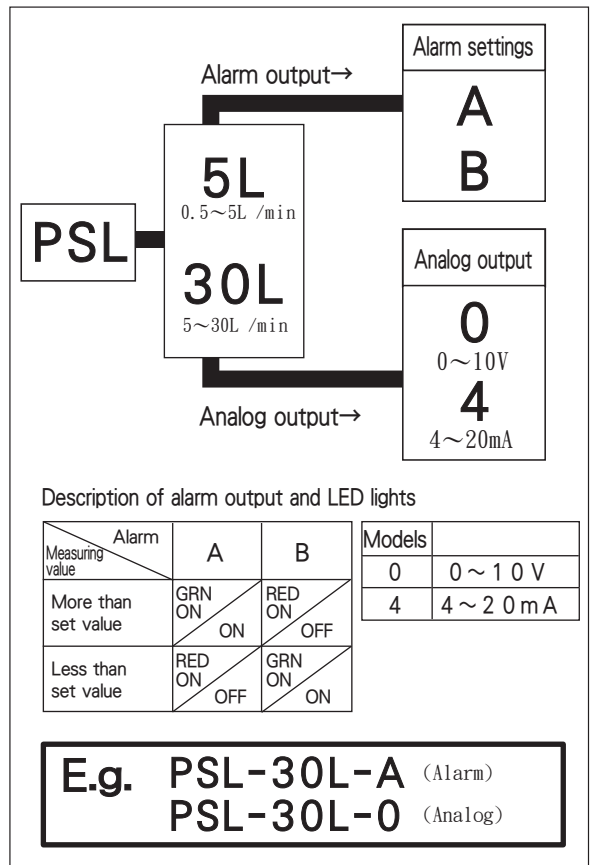
<Alarm output>



- ① Take a cap out
- ② Set a alarm value with a screw
- ③ Press a set button
- ④ LED light confirms the Deviation from set value



Order form



NOTE) Default setting of alarm output is 5L=2.5L/min、30L=15.0L/min.

Please contact us for customizing the alarm output value.

*Flow rate display "DAM" is also available for PSL.

*The design, dimensions and specifications of the product in the catalog were correct at the date of publication and are subjected to change without notice.

*Feel free to contact us if you have any require about our products.